



GINGORD INTEGRATED
NIGERIA LIMITED

RC NO: 1026163

GINGORD INTEGRATED NIGERIA LIMITED

COMPANY PROFILE



Driving Excellence in Oil and Gas
Solutions

TABLE OF CONTENTS

1

Who We Are

2

Our Services

3

Our Expertise

4

Our Approach

5

Projects And Portfolio

6

Our Team

7

Health Safety And Environment (HSE)

8

Technology And Innovation

9

Why Choose Us

10

Our Clients



Who We Are

Introduction

Gingord Integrated Nigeria Ltd. is a leading provider of innovative solutions in the oil and gas sector, specializing in procurement services, pipeline construction, electrical instrumentation, installation and commissioning of cathodic protection systems, asset integrity management, and other engineering services. With a commitment to excellence, we deliver high-quality, reliable, and cost-effective solutions that meet the needs of our clients in Nigeria and beyond.

Founded on the principles of integrity, professionalism, and innovation, *Gingord Integrated Nigeria Ltd.* has earned a reputation as a trusted partner in the oil and gas, power, and engineering industries. We are dedicated to offering services that enhance operational efficiency, ensure safety, and promote sustainability for the organizations we serve.



Mission & Vision

MISSION

- Our mission is to provide world-class, reliable, and innovative solutions in the oil and gas industry by leveraging our extensive experience, advanced technologies, and a client-focused approach. We aim to exceed customer expectations by delivering timely, high-quality services that drive sustainable growth and success.

VISION

- To be a global leader in providing cutting-edge, sustainable engineering solutions to the oil and gas industry, recognized for our commitment to quality, safety, and innovation.

CORE VALUES

- Integrity: We uphold the highest ethical standards in all our operations, ensuring transparency and trust in every project.
- Excellence: We are committed to delivering superior services with attention to detail, ensuring that every project meets international quality standards.
- Innovation: We continuously explore new technologies and methods to enhance our services, bringing innovative solutions to every challenge.
- Safety: The safety of our team, clients, and environment is our top priority. We adhere to rigorous safety protocols in every phase of our work.
- Sustainability: We are dedicated to promoting environmentally responsible practices, contributing to sustainable development in the communities we serve.



Our Services

At **Gingord Integrated Nigeria Ltd.**, we offer a comprehensive range of services designed to meet the diverse and demanding needs of the oil and gas, power, and engineering sectors. Our solutions are built on innovation, expertise, and a commitment to excellence, ensuring the successful delivery of every project. We provide tailored, high-quality services that support operational efficiency, safety, and sustainability across the full lifecycle of projects.



PROCUREMENT SERVICES

- We specialize in providing end-to-end procurement solutions for the oil and gas, construction, and industrial sectors. Our services are designed to streamline the sourcing, purchasing, and supply chain processes, ensuring timely delivery and compliance with international standards. From materials and equipment to specialized components, we provide competitive pricing, quality assurance, and efficient logistics.

Our procurement services include:

- - Sourcing and acquisition of materials and equipment
- - Vendor management and negotiations
- - Customs clearance and logistics
- - Supply chain optimization
- - Risk management and compliance

PIPELINE CONSTRUCTION

- We offer full-spectrum pipeline construction services, from design and engineering to installation and commissioning. Our team brings together years of experience and cutting-edge technology to construct safe, durable, and efficient pipelines for oil, gas, and water transportation. We deliver projects with a focus on safety, quality, and timely completion. Our pipeline construction services include:
- - Pipeline route selection and survey
- - Engineering design and feasibility studies
- - Trenching, welding, and pipe laying
- - Pipeline testing and commissioning
- - Maintenance and repair of existing pipelines



ELECTRICAL INSTRUMENTATION

- We provide comprehensive electrical and instrumentation solutions to meet the complex demands of the oil and gas, power, and manufacturing industries. Our services include the design, installation, and commissioning of electrical systems, instrumentation, and control systems. We ensure precise calibration, optimal performance, and long-term reliability through advanced technologies. Our electrical instrumentation services include:
 - - Installation of electrical systems and circuits
 - - Control panel design and integration
 - - Calibration and certification of instruments
 - - SCADA and PLC-based automation
 - - Preventive maintenance and troubleshooting

INSTALLATION AND COMMISSIONING OF CATHODIC PROTECTION SYSTEMS

- Cathodic protection systems are essential in safeguarding pipelines, storage tanks, and other infrastructure from corrosion. We offer the installation, testing, and commissioning of cathodic protection systems, ensuring long-lasting protection of critical assets. Our services include:
 - - Design and engineering of cathodic protection systems
 - - Installation of sacrificial anodes and impressed current systems
 - - Cathodic protection system testing and monitoring
 - - Regular maintenance and performance analysis
 - - Consultancy on corrosion control and prevention



ASSET INTEGRITY MANAGEMENT

- At **Gingord Integrated Nigeria Ltd.**, we focus on ensuring the integrity, safety, and reliability of assets throughout their lifecycle. Our asset integrity management services help clients optimize the performance and longevity of their facilities while minimizing risks.

We provide:

- - Condition monitoring and risk-based inspection (RBI)
- - Corrosion management and control
- - Reliability assessments and lifecycle management
- - Integrity testing and compliance audits
- - Maintenance planning and execution

OTHER ENGINEERING SERVICES

- Our engineering expertise spans a wide range of disciplines, and we are capable of providing customized solutions across various sectors. We deliver innovative, cost-effective, and high-quality services that drive operational efficiency and safety.

Our other engineering services include:

- - Civil and structural engineering design and construction
- - Mechanical and electrical engineering services
- - Automation and control systems
- - Project management and consultancy
- - Environmental engineering and compliance



Our Expertise

At **Gingord Integrated Nigeria Ltd.**, we bring a wealth of expertise to every project we undertake. With years of experience in the oil and gas, construction, and engineering sectors, our team is equipped with the knowledge, skills, and innovative solutions necessary to address the most complex challenges. Our commitment to excellence is reflected in the quality of our work, the depth of our expertise, and our ability to consistently deliver results that exceed client expectations.



ADVANCED PIPELINE ENGINEERING

Expertise in the design, installation, and maintenance of pipeline systems for oil, gas, and water transportation. We use the latest materials and techniques to ensure the safety and durability of every pipeline we construct.

CATHODIC PROTECTION

We are skilled in the design and installation of cathodic protection systems that safeguard infrastructure from corrosion, employing both sacrificial anode and impressed current techniques to ensure long-lasting asset protection.

ENGINEERING DESIGN AND CONSULTANCY

From concept to execution, we provide comprehensive engineering design services, including civil, structural, mechanical, and electrical engineering. Our consultancy services assist clients in developing efficient, cost-effective solutions tailored to their specific needs.

ELECTRICAL AND INSTRUMENTATION SYSTEMS

Our proficiency in designing and implementing electrical and instrumentation systems, including SCADA and PLC-based automation, ensures optimal control, efficiency, and safety across our projects.

ASSET INTEGRITY MANAGEMENT

Our expertise in asset integrity management ensures that facilities and systems are maintained at peak performance levels. We leverage predictive maintenance techniques, condition monitoring, and risk-based inspections to enhance operational efficiency and reduce downtime.



EXPERIENCED WORKFORCE

Our team consists of highly skilled engineers, project managers, technicians, and support staff, all of whom bring years of experience and specialized knowledge to the table. From seasoned engineers with decades of industry experience to younger talent with fresh perspectives, we strike a balance between tradition and innovation. Our team's expertise covers the full spectrum of engineering disciplines, allowing us to handle a wide range of projects with confidence.

COMMITMENT TO INNOVATION

In an ever-evolving industry, we are committed to staying ahead of the curve by embracing new technologies and continuously improving our processes. From utilizing advanced simulation software for pipeline design to incorporating smart monitoring systems in asset integrity management, we invest in the tools and techniques that drive efficiency, reduce costs, and enhance project outcomes. Our dedication to innovation enables us to provide sustainable, future-proof solutions that meet the changing needs of our clients.

PROJECT MANAGERS

With extensive experience in managing complex projects from inception to completion, our project managers ensure that every project is delivered on time, within budget, and to the highest standards.

HEALTH, SAFETY, AND ENVIRONMENT (HSE) SPECIALISTS

Our HSE team ensures that all projects comply with the highest safety standards, mitigating risks and ensuring a safe working environment for all stakeholders.



Our Approach

At **Gingord Integrated Nigeria Ltd.**, our approach is centered around delivering high-quality, innovative, and efficient solutions while maintaining the highest standards of safety, sustainability, and customer satisfaction. We follow a systematic, client-focused methodology that ensures every project is executed seamlessly from start to finish, with a focus on exceeding client expectations.



CLIENT-CENTRIC PHILOSOPHY

- Our approach begins with a deep understanding of our clients' needs, goals, and challenges. We recognize that every project is unique, which is why we take the time to engage with our clients, ensuring we fully grasp the specific requirements and expectations. By fostering strong, collaborative relationships, we create tailored solutions that address both short-term objectives and long-term sustainability.
- **Initial Consultation and Requirement Gathering:** We begin each project by holding detailed discussions with our clients to understand their needs, objectives, and any specific constraints. This allows us to define a clear project scope and align our solutions accordingly.
- **Customization and Tailored Solutions:** Every client and every project is unique. We offer customized solutions that are designed to meet specific challenges and deliver the highest value. Our team works collaboratively with clients to create solutions that are cost-effective, innovative, and perfectly aligned with project goals.

EXCELLENCE IN EXECUTION

- We pride ourselves on delivering excellence in every aspect of project execution. Our team combines technical expertise, advanced technology, and a commitment to quality control to ensure that projects are completed on time, within budget, and to the highest standards.
- **Project Planning and Scheduling:** Detailed project planning is crucial for the timely and efficient delivery of services. Our team creates comprehensive project plans, including timelines, resources, milestones, and risk management strategies. This enables us to track progress and ensure everything stays on course.
- **Quality Assurance:** We adhere to rigorous quality control procedures and conduct regular inspections and tests throughout the lifecycle of every project. This ensures that the materials, equipment, and systems used are of the highest quality and meet industry standards and regulations.
- **Efficient Resource Management:** From manpower and materials to equipment and logistics, we manage all resources efficiently to prevent delays, reduce costs, and maintain smooth project execution. Our advanced resource management practices allow us to streamline processes and optimize performance.



SAFETY FIRST

- Safety is a cornerstone of our approach. We prioritize the health, safety, and well-being of everyone involved in the project—our team, clients, subcontractors, and the communities we serve. Our approach to safety includes a commitment to adhering to global safety standards, constant training, and continuous monitoring throughout every phase of the project.
- **Health, Safety, and Environment (HSE) Management:** We operate under a comprehensive HSE management system that ensures all activities are carried out in a safe, environmentally responsible manner. Our team is trained to anticipate and mitigate potential risks, ensuring a safe working environment at all times.
- **Risk Assessment and Mitigation:** Our approach includes a thorough risk assessment during the planning stage of every project. We identify potential risks and devise strategies to minimize them, ensuring that the project proceeds smoothly and without unforeseen complications.
- **Continuous Safety Monitoring:** We maintain a culture of continuous safety monitoring throughout the project's lifecycle, implementing regular site inspections and audits to ensure compliance with safety protocols.

SUSTAINABLE SOLUTIONS

- We are committed to delivering solutions that are not only effective but also sustainable. We believe in reducing environmental impact, optimizing resource use, and creating solutions that benefit both our clients and the communities in which we operate.
- **Environmental Stewardship:** We consider the environmental impact of every decision we make. Whether it's through the design of energy-efficient systems, the use of sustainable materials, or minimizing waste, we strive to protect the environment while delivering exceptional value.
- **Long-Term Viability:** We design solutions with long-term sustainability in mind, ensuring that our systems and assets continue to perform efficiently and effectively well beyond the initial project phase. Our approach is geared toward the long-term value and operational life of every solution we provide.



CONTINUOUS IMPROVEMENT AND INNOVATION

- We are always seeking ways to improve and innovate. At **Gingord Integrated Nigeria Ltd.**, we foster a culture of continuous improvement and embrace the latest technologies and methodologies. This proactive approach ensures that we remain at the cutting edge of the oil and gas, construction, and engineering industries.
- **Embracing New Technologies:** We actively explore and adopt new technologies that improve efficiency, safety, and sustainability. By integrating the latest tools and systems, we are able to offer innovative solutions that address complex industry challenges.
- **Ongoing Training and Development:** We invest in the ongoing training and professional development of our team. By keeping our workforce updated with the latest industry standards, certifications, and technologies, we ensure that we remain a trusted partner for our clients.
- **Feedback-Driven Evolution:** We value feedback from our clients and use it as a basis for continuous improvement. Our commitment to learning and evolving ensures that we consistently deliver the highest standard of service.

TIMELY AND TRANSPARENT COMMUNICATION

- Effective communication is the foundation of any successful project. We place a high value on keeping all stakeholders informed and engaged throughout the project lifecycle. Our approach includes:
- **Regular Progress Reports:** We provide regular updates to clients, ensuring transparency and helping them track the progress of the project. These reports include milestones, potential issues, and any adjustments needed to stay on schedule.
- **Stakeholder Engagement:** We engage all relevant stakeholders—clients, contractors, regulatory bodies, and communities—throughout the project. This ensures that everyone is aligned and that issues are addressed promptly.
- **Customer Support:** We are always available to provide assistance and address concerns. Our dedicated customer support team ensures that client needs are met quickly and effectively.

Projects and Portfolio

Below is a selection of key projects we have executed:

SPDC ANOH PROJECT 2024

Scope: Engineering, procurement, and construction of a 12" x 13km multiphase pipeline from Asa North to Obite.

Client: Shell Petroleum Development Company (SPDC).

Highlights:

- Successful completion of all phases from design to commissioning.
- Met stringent safety and environmental standards.

ANOH NNPC PROJECT 2024

Scope: Provision of welding services, including operations in challenging swampy terrains.

Client: Nigerian National Petroleum Corporation (NNPC).

***Highlights:**

- Deployed advanced welding techniques to address project-specific challenges.
- Ensured timely delivery despite seasonal limitations.

ANOH NNPC PROJECT 2024

Scope: Execution of lowering and tie-in scope for a 7.9km pipeline spread.

Client: Nigerian National Petroleum Corporation (NNPC).

Highlights:

- Seamless integration with existing pipeline infrastructure.
- Achieved project milestones under strict regulatory compliance.

SEPLAT ENERGY EAST ONSHORE LIMITED 2023

Project 1: Overhaul of crude oil export pumps A & B at Ohaji South Flow Station.

- Restored optimal performance of critical pump systems, ensuring uninterrupted crude oil flow.

Project 2: Replacement of defective crude oil export pump C at Ohaji South Flow Station.

- Minimized downtime and enhanced system efficiency with timely intervention.

Project 3: OHS 9L/S Hook-Up Gas-Lift provision.

- Delivered a robust gas-lift system to improve production capabilities.

Project 4: Servicing and maintenance of portable fire safety equipment for OBO and OHS flow stations.

- Maintained compliance with safety regulations and operational reliability.

Projects and Portfolio

SEPLAT ENERGY EAST ONSHORE LIMITED 2022

Project 1: Sectional replacement of the OHS delivery line.

- Upgraded key pipeline infrastructure to support enhanced capacity.

Project 2: Repair of the Ohaji South Flare Ignition System.

- Restored the functionality of critical safety systems.

Project 3: Repair of Flare Stack Pilot Ignition Systems at Ohaji Early Production Facility (EPF).

- Ensured compliance with flare management and emissions standards.

Project 4: Jisike Heater Treater Burner Repairs 1 & 2.

- Enhanced the efficiency of heating systems for crude processing.

ANOH GAS PROCESSING COMPANY LIMITED 2021

Scope: Engineering, procurement, and construction (EPC) of a pipeline for the ANOH Gas Project.

Highlights:

- Delivered a world-class pipeline system adhering to international standards.
- Ensured seamless execution through innovative engineering and effective resource management.

SEPLAT ENERGY EAST ONSHORE LIMITED 2020

Scope: Construction of a temporary storage facility for drilling waste at Ohaji South 4.

Highlights:

- Designed and built an environmentally compliant waste storage facility.
- Minimized environmental impact while supporting drilling operations.

Through these projects and more, Gingord Integrated Nigeria Ltd. has demonstrated its capability to deliver complex projects efficiently, safely, and sustainably. Our commitment to excellence and innovation positions us as a trusted partner in the oil and gas sector.

Our Team

At **Gingord Integrated Nigeria Ltd.**, our greatest asset is our people. We have assembled a team of seasoned professionals with extensive experience in the oil and gas sector, engineering, and project management.



LEADERSHIP TEAM

Our leadership team comprises industry veterans with a proven track record of successfully managing complex projects and driving strategic growth.



ENGINEERING EXPERTS

Our team of engineers are equipped with cutting-edge tools and methodologies to execute projects with precision and efficiency.



PROJECT MANAGERS

With a focus on timely delivery and cost-effective solutions, our project managers are skilled at overseeing every phase of a project.



TECHNICIANS AND FIELD SPECIALISTS

Our field specialists are trained to operate in diverse and challenging environments. Their hands-on expertise in installation, commissioning, and maintenance ensures that every project is executed to the highest standards of quality and safety.

Our Team

Our team is dedicated to delivering innovative solutions and world-class services that exceed client expectations.



SAFETY AND COMPLIANCE PROFESSIONALS

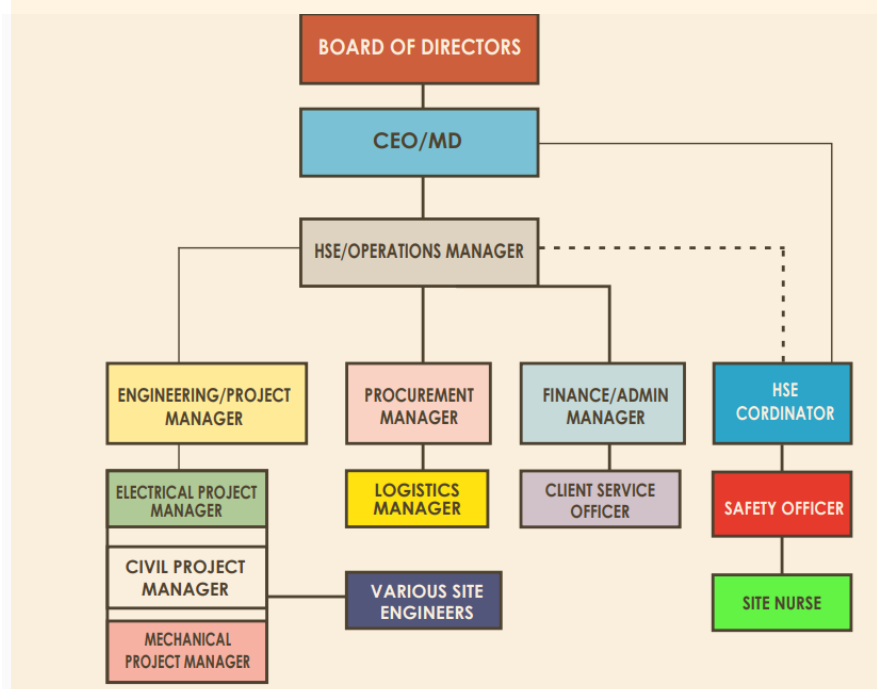
Our dedicated safety team ensures compliance with all regulatory requirements and industry best practices, maintaining a zero-incident culture across all project sites.



SUPPORT STAFF

Behind the scenes, our administrative and support teams provide the backbone of our operations. Their dedication ensures smooth processes, efficient resource allocation, and superior client service.

ORGANOGRAM



Health, Safety & Environment

HEALTH, SAFETY, AND ENVIRONMENT (HSE)

- At **Gingord Integrated Nigeria Ltd.**, we are committed to maintaining the highest standards of HSE performance to ensure the well-being of our employees, clients, communities, and the environment.
- **Our HSE Commitment**
 1. **Safety First:** We prioritize a zero-incident culture where every team member works safely and responsibly at all times.
 2. **Environmental Protection:** We minimize environmental impact through sustainable practices, pollution prevention, and adherence to environmental laws and regulations.
 3. **Employee Wellness:** We promote the physical and mental well-being of our workforce through robust health programs and workplace initiatives.
- **HSE Policies and Practices**
 1. **Risk Management:** Comprehensive risk assessments are conducted before every project, ensuring that potential hazards are identified, mitigated, or eliminated.
 2. **Training and Awareness:** Regular training sessions and safety drills are conducted to equip our workforce with the knowledge and skills needed to operate safely and efficiently.
 3. **Emergency Preparedness:** We maintain detailed emergency response plans and conduct regular simulations to ensure readiness in case of incidents.
 4. **Compliance:** Our operations are fully compliant with national and international HSE standards, including ISO 45001 and ISO 14001 certifications.
- **Environmental Sustainability**
 1. **Waste Management:** We implement effective waste management systems to reduce, reuse, and recycle project materials.
 2. **Energy Efficiency:** Our projects utilize energy-efficient technologies to minimize carbon footprints.
 3. **Community Engagement:** We work closely with host communities to ensure sustainable development and environmental conservation.
- **Safety Milestones**
- **Zero-Lost Time Injuries (LTI):** Our projects consistently achieve zero LTI through strict adherence to safety protocols.



TECHNOLOGY AND INNOVATION

- At **Gingord Integrated Nigeria Ltd.**, we continuously leverage advanced technologies and innovative practices to deliver world-class solutions that meet and exceed client expectations.
- **Cutting-Edge Technology**
 1. **Pipeline Monitoring Systems:** We employ state-of-the-art systems for real-time pipeline monitoring, ensuring integrity, safety, and operational efficiency.
 2. **Cathodic Protection Systems:** Our advanced cathodic protection technologies protect critical infrastructure from corrosion, extending asset lifespans and reducing maintenance costs.
 3. **Automation and Control Systems:** We integrate PLC-based automation and SCADA systems for seamless operational control and monitoring.
 4. **Non-Destructive Testing (NDT):** We utilize cutting-edge NDT techniques for precise asset inspections and integrity management.
- **Innovative Practices**
 1. **Digital Transformation:** We incorporate digital tools for project planning, design, and execution, enabling data-driven decision-making and operational optimization.
 2. **Sustainability in Design:** Our projects integrate eco-friendly solutions to minimize environmental impacts and align with global sustainability goals.
 3. **Custom Engineering Solutions:** We develop tailored engineering solutions to address unique client challenges, ensuring optimal results.
- **Research and Development**
 1. **Continuous Improvement:** Our R&D team focuses on identifying and implementing the latest technologies and methodologies to enhance service delivery.
 2. **Collaborative Partnerships:** We collaborate with leading technology providers and research institutions to remain at the forefront of industry innovation.
- **Empowering Our Workforce**
 1. **Advanced Tools and Training:** Our teams are equipped with the latest tools and undergo continuous training to stay updated with emerging technologies.
 2. **Innovation Culture:** We foster a culture of creativity and innovation, encouraging our employees to contribute ideas that drive technological advancement.



WHY CHOOSE US?

WHY CHOOSE US?

- **Proven Track Record**
 - - **Experience:** With years of successful project execution, we have built a solid reputation for delivering complex engineering solutions on time and within budget.
 - - **Client Satisfaction:** Our portfolio of repeat clients and positive testimonials reflects our commitment to excellence.
- **Expertise and Professionalism**
 - - **Qualified Team:** Our multidisciplinary team of engineers, technicians, and project managers brings unmatched expertise to every project.
 - - **Attention to Detail:** We adhere to the highest standards of precision and professionalism in all aspects of our operations.
- **Cutting-Edge Technology**
 - - **Innovation-Driven:** We leverage the latest technologies, including automation systems, advanced monitoring tools, and IoT-enabled solutions, to optimize project outcomes.
 - - **Customized Solutions:** Our innovative approach ensures tailored services to meet the unique needs of every client.
- **Commitment to Safety and Quality**
 - - **Zero-Incident Culture:** Safety is integral to our operations, and we consistently achieve zero lost-time injuries (LTI).
- **Comprehensive Service Offering**
 - - **End-to-End Solutions:** From procurement and pipeline construction to asset integrity management and electrical instrumentation, we provide a one-stop shop for all your engineering needs.
 - - **Versatility:** Our services cater to diverse sectors, including oil and gas, power, and construction.
- **Customer-Centric Approach**
 - - **Transparent Communication:** We maintain clear, open communication throughout the project lifecycle.
 - - **Timely Delivery:** Our efficient processes and project management ensure timely delivery without compromising quality.

Our Clients



Shell



TotalEnergies



1. ANOH GAS PROCESSING COMPANY
2. SEPLAT ENERGY PLC.
3. Oilserve Ltd.
4. Shell Petroleum Development Company Ltd.
5. NNPC
6. Total Energies
7. Federal Government



No 7 Elder Worlu Road,
Rumuigbo Portharcourt
Rivers State



No 2 Nwaeze Close
Assa/Awarra Exp. Road
Ohaji/Egbema L.G.A Imo State.



**Gingord
Integrated
Nigeria Limited**



08028666150, 08037772590



gingordintegrated@yahoo.com

